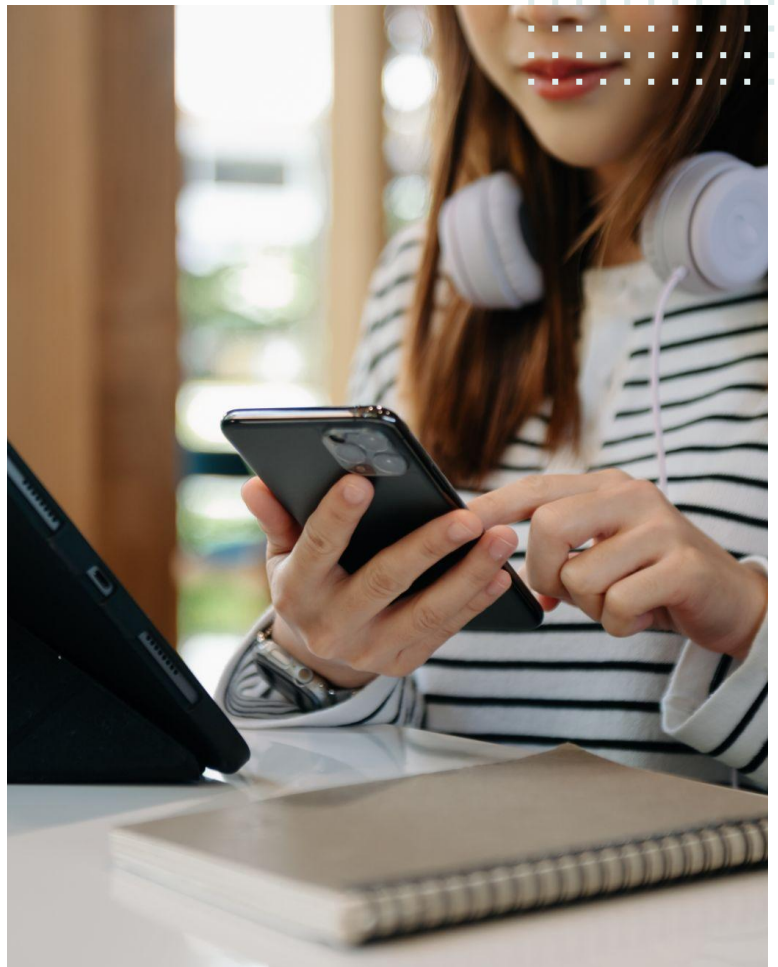


Connectivity Package

Monthly Connectivity Fee for
Longfellow Place Apartments

We recognize the power of technology and connectivity in daily life and strive to create innovative solutions that enhance how our residents live and work. That's why we've customized packages to elevate your lifestyle and provide seamless opportunities to thrive throughout our community.



Connectivity Features | \$65 / month

High Speed Internet

Our internet package offers cost-effective and high speed connectivity (1 GB) to elevate your in-home digital experience. Enhancing productivity, entertainment, and communication with seamless streaming, downloading, and reliable connections - all designed to meet your needs. (Powered by Xfinity)

The monthly amount of \$65 for the connectivity package will be added to your resident statement to support the features available to you at the community. Please contact the leasing office with any questions.