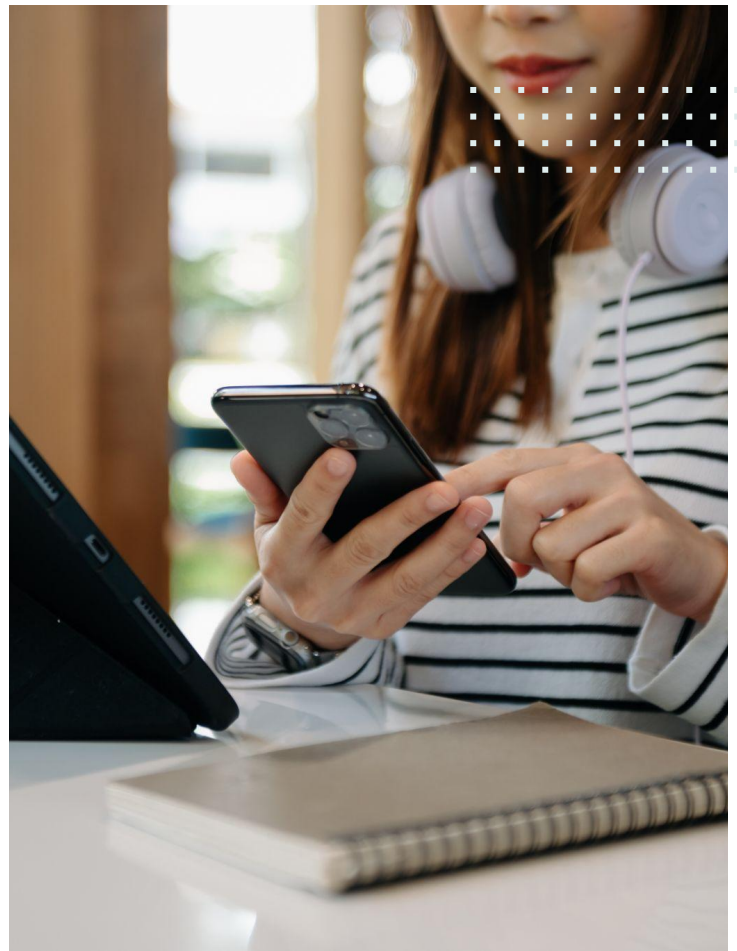


Technology Package

Monthly Technology Fee for
70 Greene

We recognize the power of technology in daily life and strive to create innovative solutions that enhance how our residents live and work. That's why we've customized a unique technology package to elevate your lifestyle and provide seamless opportunities to thrive throughout our community.



Technology Features



SmartHome

One app to manage access and atmosphere throughout your home with controlled keycodes, thermostat programming, and add additional smart home features of your own! *(Powered by SmartRent)*



Smart Building Access

Smart and controlled full-building access for you and your guests. Easily unlock doors throughout the community and share temporary codes with your guests or service providers.



Community-Wide WiFi

High-speed Wifi (1GB) available throughout the community from common areas to exterior spaces, with an option to activate in-unit Wi-Fi instantly and follows you throughout the community. *(Powered by Aerwave. In-unit Wi-Fi additional fee)*



MyEquity Resident Portal

Stay connected through MyEquity to pay rent, submit service requests, connect with neighbors, find important information about your community, and more!

The monthly technology fee is a required fee. This monthly amount of \$45 will be added to your resident statement to support the technology features available to you at the community. Please contact the leasing office with any questions.