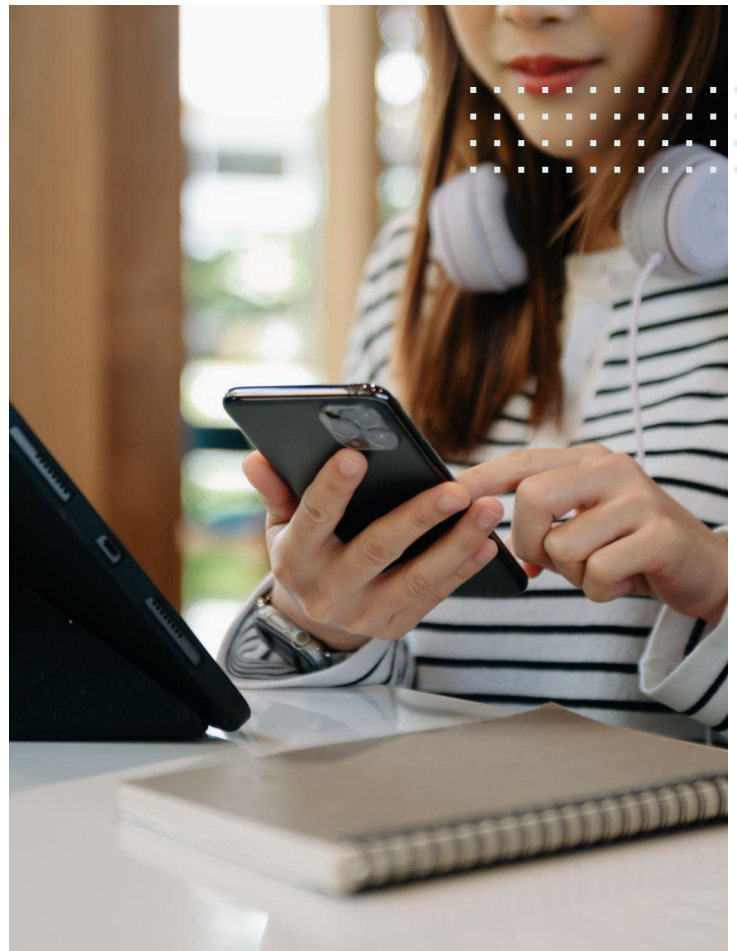


# Technology Package

Monthly Technology Fee for  
**Marlowe Apartments**

We recognize the power of technology in daily life and strive to create innovative solutions that enhance how our residents live and work. That's why we've customized a unique technology package to elevate your lifestyle and provide seamless opportunities to thrive throughout our community.



## Technology Features

### SmartHome



One app to manage access and atmosphere throughout your home with controlled keycodes, thermostat programming, and add additional smart home features of your own! *(Powered by SmartRent)*

### Smart Building Access



Smart and controlled full-building access for you and your guests. Easily unlock doors throughout the community and share temporary codes with your guests or service providers.

### MyEquity Resident Portal



Stay connected through MyEquity to pay rent, submit service requests, connect with neighbors, find important information about your community, and more!

The monthly technology fee is a required fee. This monthly amount of \$25 will be added to your resident statement to support the technology features available to you at the community. Please contact the leasing office with any questions.