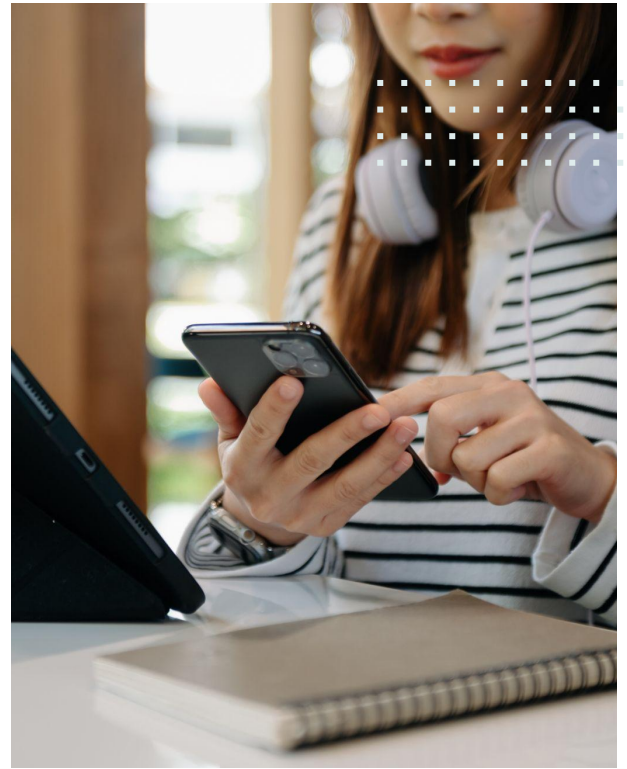


# Monthly Technology & Connectivity Package for

## Crest at Park Central Apartments

We recognize the power of technology and connectivity in daily life and strive to create innovative solutions that enhance how our residents live and work. That's why we've customized packages to elevate your lifestyle and provide seamless opportunities to thrive throughout our community.



### Technology Features | \$25 / month



#### SmartHome

One app to manage access and atmosphere throughout your home with controlled keycodes, thermostat programming, and add additional smart home features of your own!  
*(Powered by SmartRent)*



#### Package Services

Smart package lockers and/or rooms to securely store your packages, alert you of deliveries, and available to you 24/7.



#### MyEquity Resident Portal

Stay connected through MyEquity to pay rent, submit service requests, connect with neighbors, find important information about your community, and more!



#### Smart Building Access

Smart and controlled full-building access for you and your guests. Easily unlock doors throughout the community and share temporary codes with your guests or service providers.

### Connectivity Features | \$65 / month

#### High Speed Internet

Our internet package offers cost-effective and high speed connectivity (1 GB) to elevate your in-home digital experience. Enhancing productivity, entertainment, and communication with seamless streaming, downloading, and reliable connections - all designed to meet your needs. *(Powered by Diamond)*

The monthly technology package and connectivity feature is a required fee. The monthly amount of \$25 for the technology package and a monthly amount of \$65 for the connectivity package will be added to your resident statement to support the features available to you at the community. Please contact the leasing office with any questions.