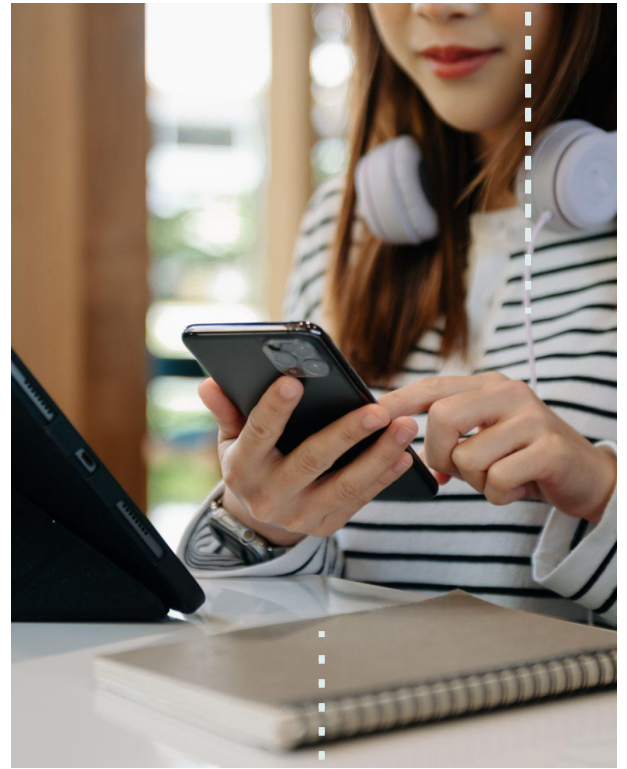


# Monthly Technology & Connectivity Package for

## Station 92

We recognize the power of technology and connectivity in daily life and strive to create innovative solutions that enhance how our residents live and work. That's why we've customized packages to elevate your lifestyle and provide seamless opportunities to thrive throughout our community.



### Technology Features | \$25 / month



#### SmartHome

One app to manage access and atmosphere throughout your home with controlled keycodes, thermostat programming, and add additional smart home features of your own! *(Powered by SmartRent)*



#### Smart Building Access

Smart and controlled full-building access for you and your guests. Easily unlock doors throughout the community and share temporary codes with your guests or service providers.



#### MyEquity Resident Portal

Stay connected through MyEquity to pay rent, submit service requests, connect with neighbors, find important information about your community, and more!